

December 2025

SSE Renewables
Red Oak South
South County Business Park
Leopardstown
Dublin D18 W688

Re: Reminder re Drumnahough Wind Farm, Public Information Evenings

Dear Householder,

We are writing to you again on behalf of SSE and FuturEnergy Ireland to remind you about upcoming Public Information Evenings for Drumnahough Wind Farm, to be located within the townlands of Treankeel, Meenadaura, Carrickalangan and Cark, adjacent to the existing Culliagh, Meentycat and Lenalea wind farms – see map for reference.

As we outlined previously, Drumnahough is a consented 58MW, 12-turbine wind farm, being co-developed by SSE Renewables and FuturEnergy Ireland. Planning permission was granted by An Bord Pleanála (now An Coimisiún Pleanála) in September 2022 following local engagement in 2019–2020.

Pre-construction works have commenced, with full construction starting shortly. **We are hosting two Public Information Evenings to provide an opportunity for the community and businesses to learn more about the construction phase of the wind farm and local supply chain opportunities linked to the project's delivery**, details as follows:

- Wednesday, 10th December – Jackson's Hotel, Ballybofey (F93 RD40), 2:30pm–7:30pm,
- Thursday, 11th December – Foxhall Community Hall, Newmills, Letterkenny (F92 KC98), 2:30pm–7:30pm.

Drumnahough Wind Farm represents a €120 million investment, creating around 60 jobs at peak construction. Once operational, it will help Ireland meet its 2030 renewable energy targets and support energy security. A community benefit fund will also be established in consultation with local residents to support projects in the area.

Drumnahough Wind Farm is the latest investment in Donegal from SSE and FuturEnergy Ireland. Lenalea Wind Farm, also co-developed with FuturEnergy Ireland, became operational in late 2023, while SSE Renewables already operates the Culliagh and Meentycat wind farms, all of which contribute to local employment and community funding.

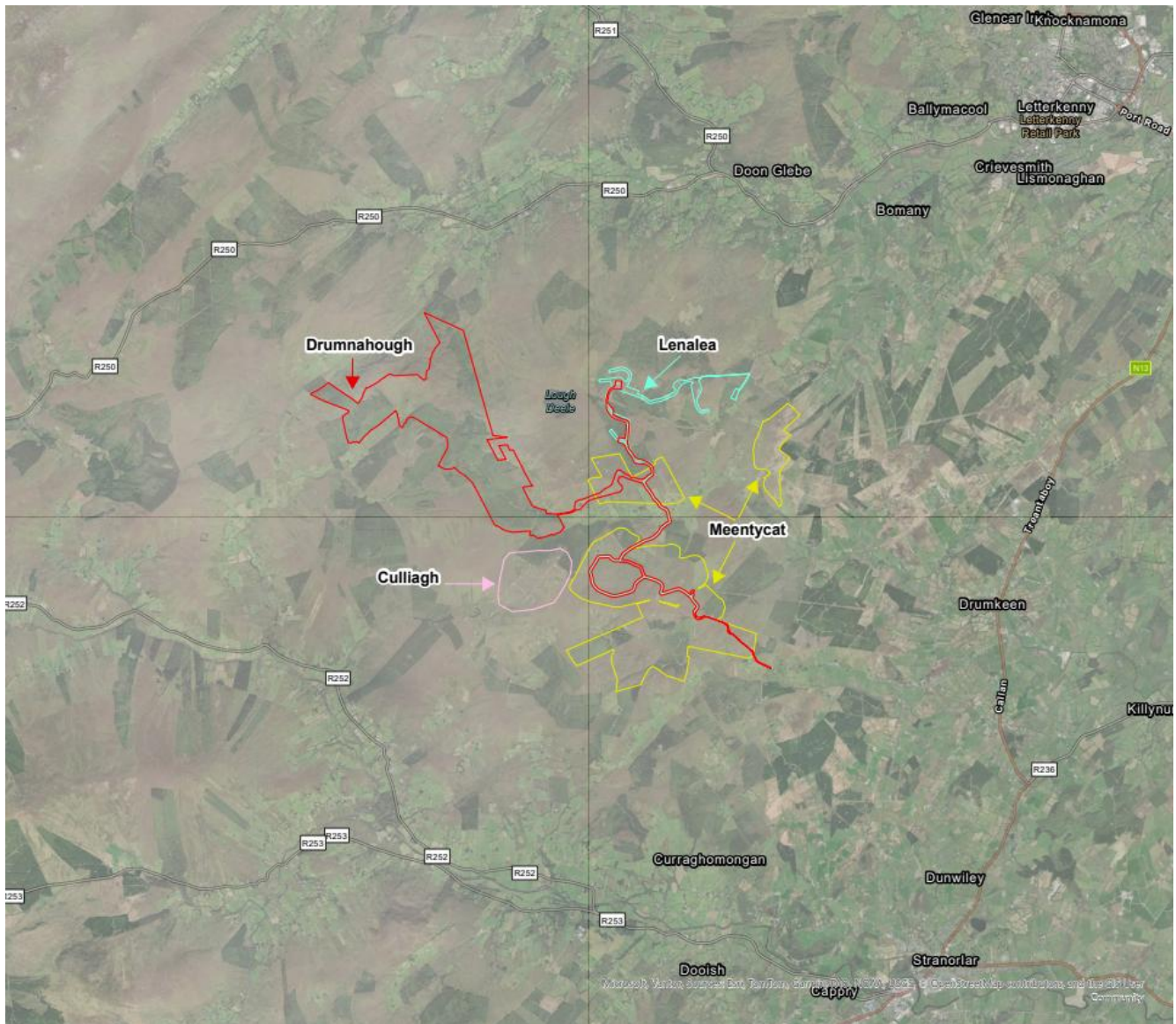
For further updates, please visit sserenewables.com/Drumnahough.

If you have any questions, please contact us.

Kind regards,

Seamus Herron, Community Liaison Officer, SSE Renewables

Mobile: 087 919 5467 **Email:** clo@sse.com



Map: Site boundaries of the respective Drumnahough (SSE-FEI – pre-construction works commenced 2025), Lenalea (SSE-FEI – operational since 2023), Meentycat (SSE – operational since 2004, with extensions complete in 2009) and Culliagh (SSE – operational since 2000) wind farms. For reference, Letterkenny is located to the north-east and Stranorlar to the south-east.